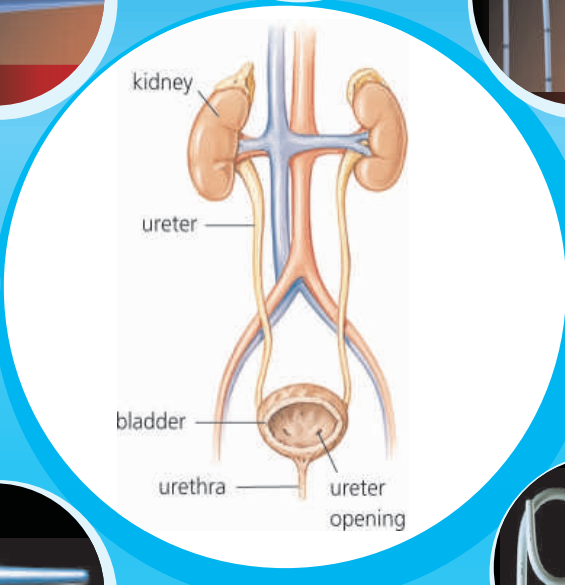
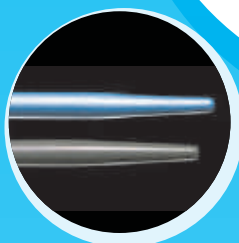
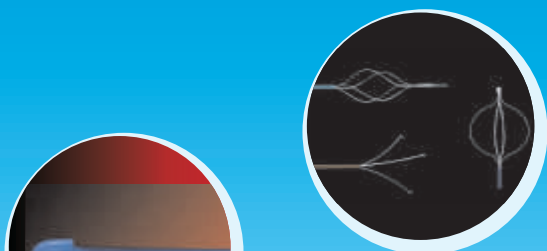




CB-001

ISO 9001:2008
CERTIFIED COMPANY



CHIRAG MEDITECH PVT. LTD.

GYNAECOLOGY

IUI Catheter

The Chirag Meditech Pvt. Ltd. IUI catheter is made up of a 6F / 8F clear polyethylene. Intra Uterine insemination catheter Used for the introduction of washed spermatozoz into the uterine cavity.

IUI catheter made out of clear polyethylene, 17cm In length. With an OD of 2.00mm and an ID of 1.10mm, a 4.5cm distal segment with double side eyes and a rounded tip insures a very smooth entry through the cervix with minimal disturbance to the endometrial stroma. This is accomplished with 17cm of marked catheter shaft with 6F, 8Fr. in diameter for superior and secure handling.



A proximal Luer lock allows for proper connection with a syringe. The Chirag Meditech Pvt. Ltd. IUI catheter allows for the sperm to bypass the cervix so that an increased number of high quality sperm can reach the uterine cavity and the fallopian tubes and Also Used for the introduction of washed spermatozoa into the uterine cavity.

This products is designed with a flexible body, which enables the catheter to fit itself to the curvature of the uterus. It is relatively a small and maneuverable IUI catheter.

Features

- Soft inner catheter with Double Side Eyes and Rounded Tip
- Super smooth entry to the endometrial stroma
- Outer shaft is marked in 1cm segments
- Standard Luer Lock
- Length: 17cm
- OD: 2.0mm Shaft (13cm length); 1.66mm Distal (4.5cm length)
- ID: 1.07mm



This device include's one 1ML syringe and one Catheter, its comes completly Sterile and packed individually for yours convenience.

Chirag Meditech I.U.I Cannula available in 3 types:

I.U.I Cannula :6/8Fr	Open End & Closed End	Length : 11 cm 15cm & 17 cm
I.U.I Cath. STRIGHT : 6.0Fr	Open End	Length : 11 cm.
I.U.I Cath. CURVED : 6.0Fr, 6/8Fr	Open End & Closed End	Length : 11 cm 15cm & 17 cm

Caution:-

These catheters are not designed to be reused or resterilized. Destroy after single use.

Note:

1. All these devices are supplied sterile in peel-open packages.
2. Intended for single use only.
3. Sterilized in ETO (Ethylene Oxide) Gas only.

